





# A Vertical Gated Village for the Modern Era

A new era requires new thinking.

It demands a new understanding of the home; how we live, interact, unwind, and be productive. Bringing together the finest architects, designers, and artisans to deliver this unique vision, Haraya Residences offers an uncompromising new perspective on cosmopolitan living.

Haraya Residences is a vertical gated village located at the heart of Bridgetowne Estate, featuring a collection of 558 beautifully appointed residences in the South Tower and more forthcoming in the North Tower.

Take in the soaring views; lounge in the lofty Italian-inspired loggias that redefine the experience of home living; rediscover a sense of freedom and vibrancy among the lush private landscapes and world-class amenities.

Welcome home to Haraya Residences.

# Open Living Like You've Never Experienced Before

Haraya is an old Filipino word which means "imagination". At Haraya Residences, it is a call to reimagine possibilities: new vistas from new vantage points; a new township brimming with innovation and opportunities; spatial configurations to address new needs, and new ways to experience comfort, privacy, and the sense of freedom in your homes.

New perspectives from the heart of your home.



\*Artist's perspective for illustration purposes only

# Cosmopolitan Living Reimagined

Surrounded by some of the most prestigious gated communities in Metro Manila, with easy connections to Bonifacio Global City, and Ortigas Central Business District through E. Rodriguez Jr. Avenue—Haraya Residences offers a unique balance of convenience and privacy.

Located at the very heart of Bridgetowne Estate, a new mixed-use township in Pasig, Haraya Residences will be nestled among gleaming office towers and other premium residential developments.

Discover the finest shopping and dining experiences at your fingertips or explore exciting destinations nearby. No matter your preference, options abound.



# Places



Category	Place	Travel Dist (km)
MAJOR COMMERCIAL CENTERS	1 - Shang Central	4
	2 - Ayala Malls The 30th	3
	3 - Eastwood City	3
	4 - Robinsons Galleria	3
	5 - The Podium	3
	6 - Greenhills Center	4
	7 - SM Megamall	4
TOP MEDICAL INSTITUTIONS	8 - The Medical City	3
	9 - Cardinal Santos Medical Center	5
	10 - St. Luke's Medical Center-Global City	9
	11 - Makati Medical Center	13
	12 - Saint Paul College, Pasig	3
ACADEMIC INSTITUTIONS	13 - Saint Pedro Poveda College	3
	14 - University of Asia and the Pacific	4
	15 - Xavier School	4
	16 - La Salle Greenhills	4
	17 - Ateneo de Manila University	6
	18 - Reedley International School	6
	19 - Immaculate Conception Academy	6
	20 - Lourdes School of Mandaluyong	6
	21 - Miriam College	7
	22 - The British School Manila	7
	23 - Life Academy International	8
	24 - Everest Academy Manila	8
	25 - International School Manila	8
	26 - Chinese International School	9
	27 - University of the Philippines Diliman	12
CORPORATE HEADQUARTERS	28 - Asian Development Bank	3
	29 - BDO Corporate Center	3
	30 - Meralco	3
	31 - UnionBank of the Philippines	3
	32 - Jollibee Corporation	4
	33 - San Miguel Corporation	5
	34 - Unilab	5
35 - Petron Corporation	6	
AIRPORTS	36 - NAIA Terminal 3	17
	37 - NAIA Terminal 2	19
	38 - NAIA Terminal 1	20

# A New Perspective on Cosmopolitan Living



\*Lifestyle image

## STAY CONNECTED

Haraya Residences offers convenience and connections within Bridgetowne Estate and beyond, with easy access to the best that Metro Manila has to offer.



\*Lifestyle image

## AT YOUR DOORSTEP

Explore a wide range of exciting dining and shopping options at your doorstep. Our new integrated retail and amenities component reimagines what it means to have everything at your fingertips.



\*Lifestyle image

## A PRIVATE RETREAT

From the home to the amenities and vibrant gardens, privacy is part of the design—discover your own private retreat at Haraya Residences.

# Building the vision

with Edgar E. Cozzio | Architect  
Director, P&T Group

“Haraya Residences engages all your senses. It is a home to return to, an escape from outside stresses. It is a sanctuary to enjoy family and to socialize with friends.

How we live and where we live is ever changing. Cities grow and how we live in them matters greatly for our health and the health of the community. A well-planned and a well-thought-of development such as Haraya Residences—in harmony with the environment, bringing the outdoors in through the loggias, incredible landscaping, stunning views—is paramount in improving quality of living.”

“There is nothing more rewarding as an architect as when residents feel at home even before they approach the lobby. The thought of it alone shall give peace and a smile on our faces.”





\*Artist's perspective for illustration purposes only.

## Crafting the lifestyle

With Francesca Muzio | Interior Designer  
Founder and CEO, FM Architettura

"When I begin to design a new space, I always think about not only the next ten years, but also the next, twenty, thirty years to envision what life might be like.

With Haraya Residences, we drew inspiration from Filipino art, and reinterpreted the traditional notion of home life, which has changed so substantially over the last few years, and apply it in new and inspiring ways.

There is a new awareness of the importance of domestic comfort and a desire for more tactile homes—this has been all the more evident—along with having al fresco spaces and opportunities to be closer to nature.

The loggia is a unique feature of Haraya Residences. A loggia is an extension of the interior, but also a part of the exterior; a space that can take on many personalities—an intimate garden for example, or an outdoor living room. The idea is to create a flexible layout, discovering new relationships and interactions between spaces that allow for a more contemporary lifestyle. Our design firm calls this concept a "pixelated layout"—a reimagining of the modern home.

For us, the experience of a private community is the new amenities component. What we mean by this is that common areas are not only spaces that residents can use, but are natural extensions of their homes, places where residents can cultivate their passions, recharge, rejuvenate, and maybe most importantly, connect with neighbors, friends and family."

# A Dramatic Entrance

An exquisite balance of lush greenery and masterfully articulated details greet you at the entrance. An elegant design from the team of world-class architects and interior designers signifying that you have arrived.





# Rediscover a Sense of Vibrancy

The amenities at Haraya Residences is the heart of the development—where privacy, community, and vibrant landscaping come together.

Escape to the private gardens on the podium or catch a movie with family and friends at The Viewing Room; curl up with a novel at The Library, or wine and dine guests in exquisitely-furnished function rooms.

The outdoor amenities of Haraya Residences offers over 2,500 square meters of thoughtfully designed outdoor amenities, featuring a variety of beautifully tended green spaces and private nooks. Unwind with the whole family in the swimming pools and children's play areas; decompress after a day at the office in the jacuzzi; rejuvenate with some outdoor yoga under the swaying trees.

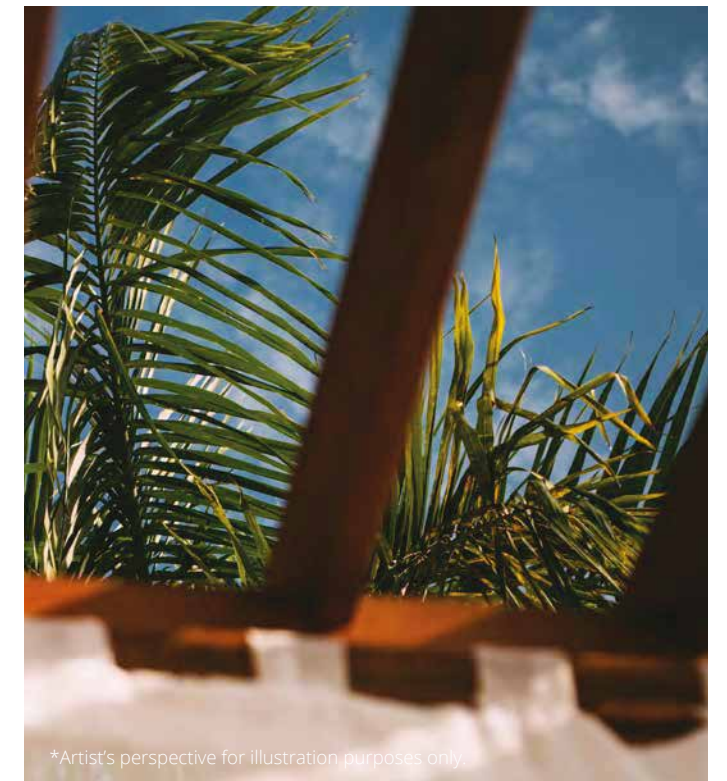


\*Artist's perspective for illustration purposes only.



\*Artist's perspective for illustration purposes only.

Vibrant flora and verdant greens welcome you to the heart of the vertical gated village, designed for the whole family.



\*Artist's perspective for illustration purposes only.



\*Artist's perspective for illustration purposes only.



\*Artist's perspective for illustration purposes only.

## Outdoor Amenities

- Tropical Pool
- Kiddie Pool
- Jacuzzi
- Children's Play Area
- Outdoor Lounge Area
- Garden Areas

Just as in a traditional gated village, Haraya Residences is designed to enkindle a sense of community in a safe, secure, and private environment. Lounge by the pool, stroll through the lush grounds, and enjoy the many other amenities at Haraya Residences.



\*Artist's perspective for illustration purposes only.



## Indoor Amenities

The Veranda  
 - Indoor  
 - Al Fresco  
 The Tea Room  
 The Studio  
 The Playroom  
 The Library  
 The Lounge

The Chef's Kitchen  
 The Lobby Lounge  
 The Game Room  
 The Viewing Room  
 The Gym  
 Changing Rooms  
 Sauna

Vibrant interiors bring in bright natural light, while the organic, curvilinear walls and design motifs create a soft, inviting environment—perfect for the whole family.



\*Artist's perspective for illustration purposes only.

The Gym at Haraya Residences features a full suite of world-class fitness and wellness equipment in over 300 square meters of dedicated space at your doorstep. Whether you are just starting out or training for performance, keeping fit has never been more convenient.



\*Artist's perspective for illustration purposes only.



\*Artist's perspective for illustration purposes only.

Celebrate the important things in life. From a collection of unique venue spaces and lounges, to a private cinema, karaoke room, children's playroom, collaborative workspaces and more— There is 2,270 square meters of indoor amenities designed for you to make the most of your home.



\*Artist's perspective for illustration purposes only.



\*Artist's perspective for illustration purposes only.

## The Veranda

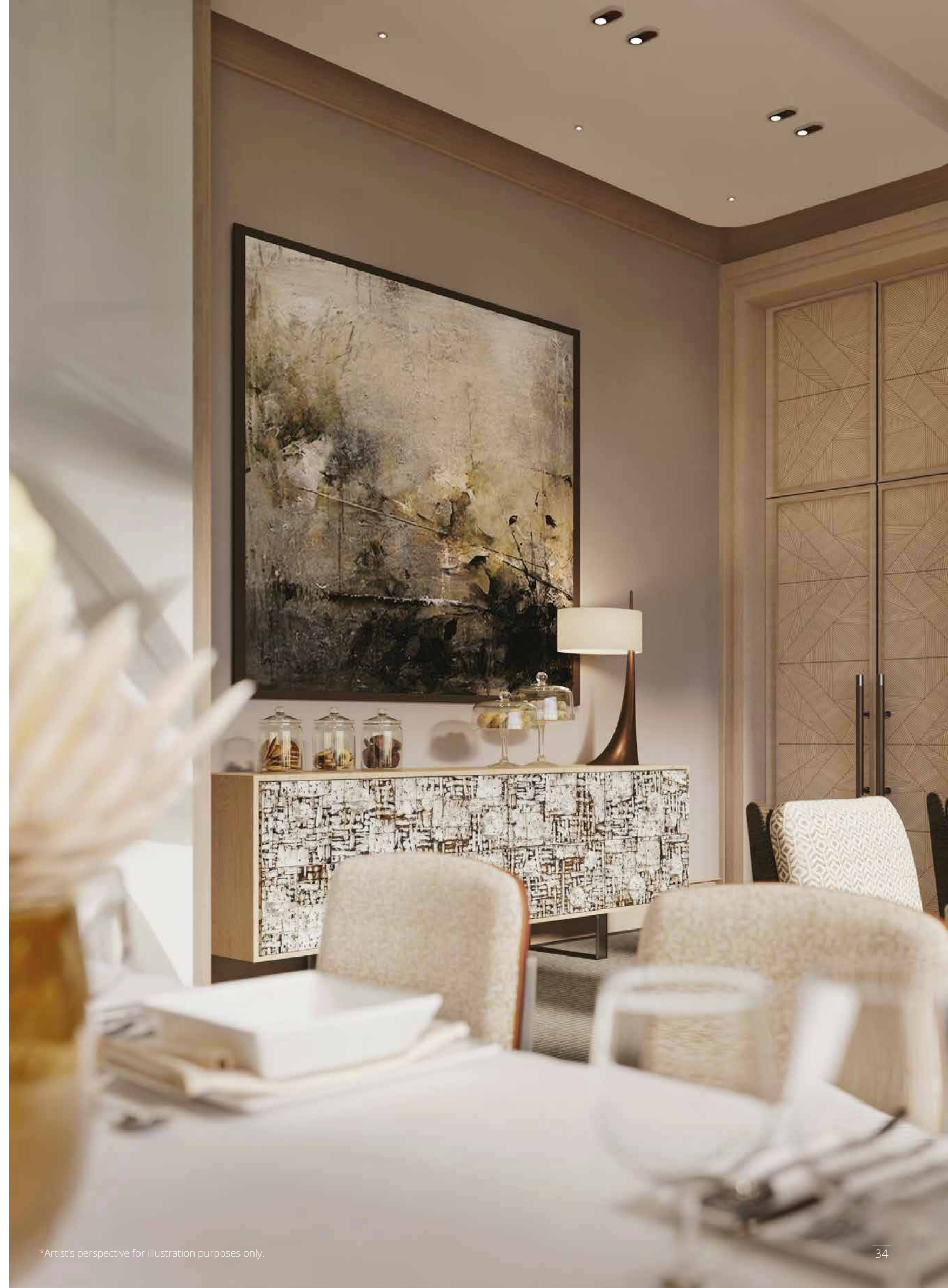
Celebrate at The Veranda with over 450 square meters of exquisitely designed function space with floor-to-ceiling windows and double doors that extend into the stunning gardens outside.



\*Artist's perspective for illustration purposes only.

## The Tea Room

The Tea Room is a beautifully appointed private room decorated with handcrafted furniture and artwork, ideal for more intimate gatherings or business meetings.



\*Artist's perspective for illustration purposes only.

## The Chef's Kitchen

Host an unforgettable private party for friends and family at The Chef's Kitchen. Invite a private chef or roll up your sleeves and showcase your culinary skills in this cozy dining room featuring a fully-integrated pantry, hand-curated artwork, and exquisitely appointed furnishings.



# The Lobby Lounge

The Lobby Lounge is Haraya Residences' largest lounge venue, featuring expansive floor-to-ceiling windows showcasing the stunning panoramic views of the skyline in a light filled environment. A versatile space for both formal and informal occasions.



\*Artist's perspective for illustration purposes only.

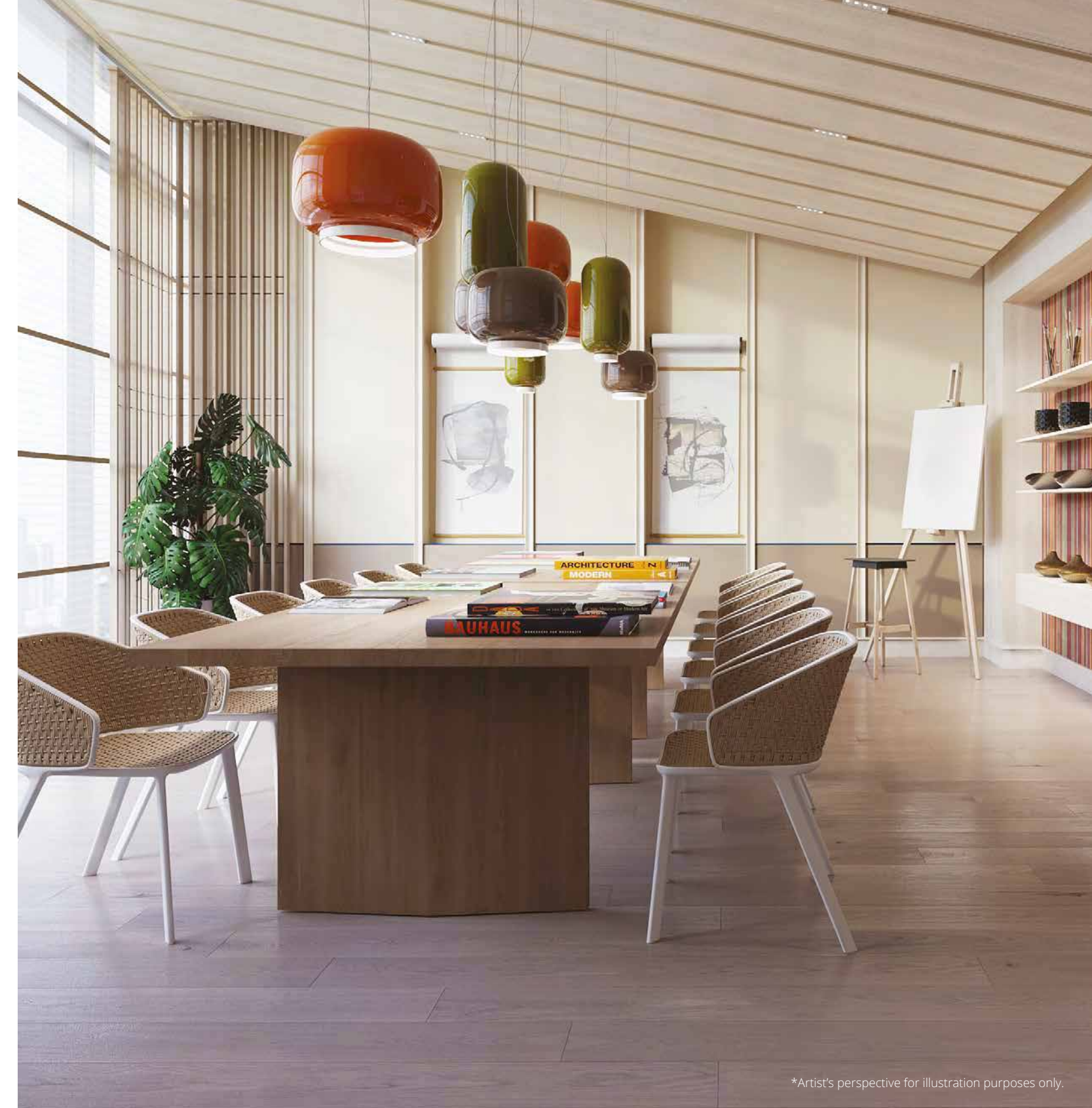




\*Artist's perspective for illustration purposes only.

## The Viewing Room

Enjoy a blockbuster or karaoke your heart out at The Viewing Room, a purpose-designed audio visual entertainment space perfect for celebrating with friends and family.



\*Artist's perspective for illustration purposes only.

## The Studio

Productivity at your fingertips. The Studio is a flexible and open creative space perfect for collaborative work or for hosting workshops and meetings.

# Step Outside Into the Heart of Your Home



Now more than ever, home is everything: a place where big plans are shared and lifelong memories made; a place for family and friends, for creativity and collaboration; a sanctuary to return to at the end of each day.

At Haraya Residences, our one-, two-, and three-bedroom suites reimagine the relationships between the interior and exterior experiences with lofty Italian-inspired loggias and sweeping new spatial configurations that expand the very notion of a home.

Welcome to Haraya Residences.

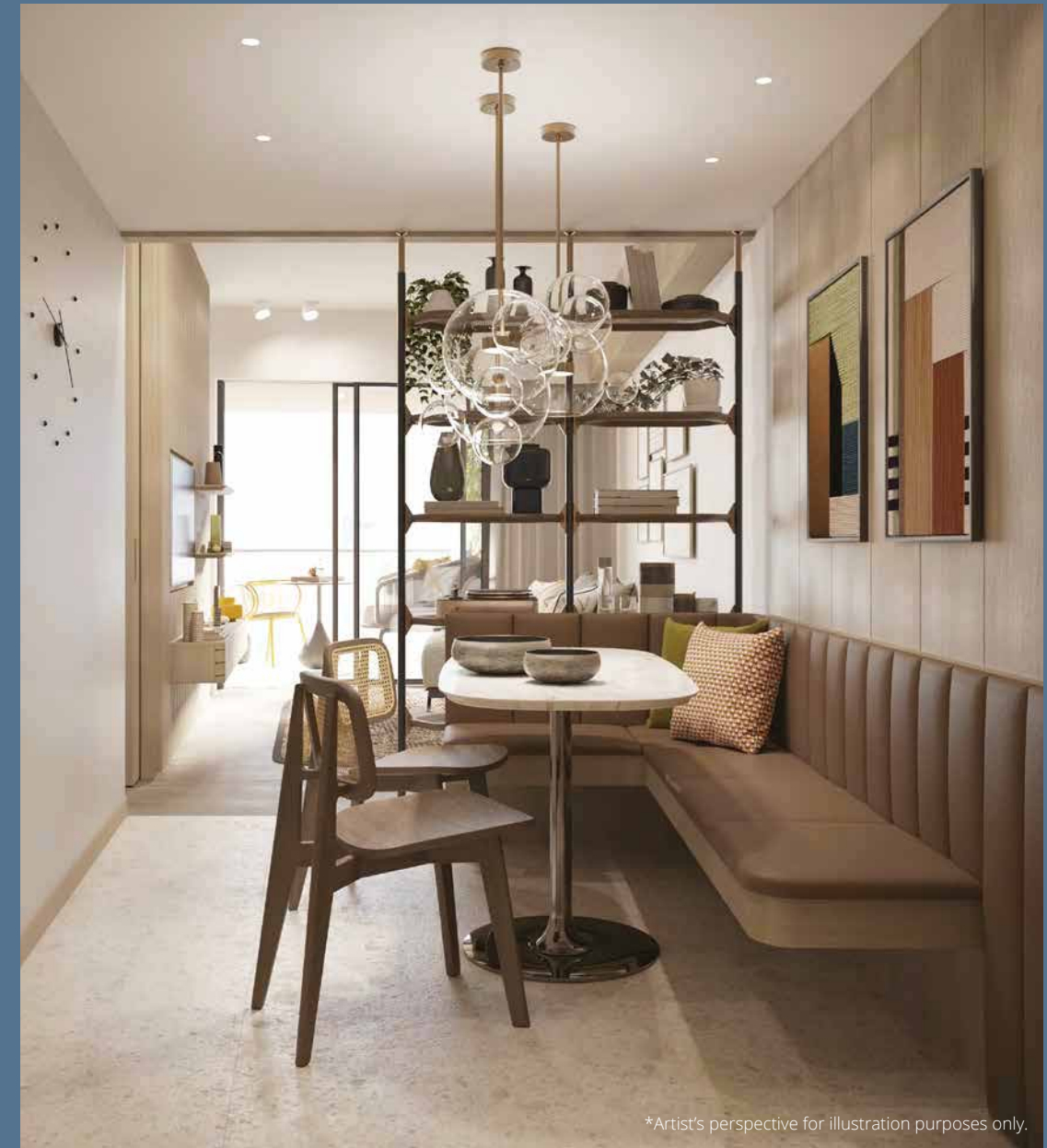
# The One-Bedroom Unit (A, B, C, D, F, I)

The One-Bedroom Unit reimagines the traditional one-bedroom layout with additional flexible space and a loggia that expands the airy living room.

The curvilinear glass partition provides privacy and flexibility when needed, and unifies the living room into a home that is perfect for relaxing and entertaining alike.



Soft curves and generous use of glass partitions bridge the interior and exterior spaces, forming new patterns of circulation and new ways to experience life at home.



\*Artist's perspective for illustration purposes only.



\*Artist's perspective for illustration purposes only.



\*Artist's perspective for illustration purposes only.



*\*Artist's perspective for illustration purposes only.*



### The One-Bedroom Unit D

Approx. 66 - 67 sqm  
Approx. 710 - 721 sqft

*\*Featured here is one of six one-bedroom layouts in the building.  
\*Artist's perspective for illustration purposes only.*

New spatial configurations designed not only to delight and bring daily joy, but incorporate exciting design thinking to maximize usable space and frame the expansive views.

# The Signature One-Bedroom Unit (F)

The Signature One-Bedroom Unit offers an expansive living room configuration that integrates an innovative curvilinear den and more loggia space, along with a spacious master bedroom and en suite bathroom, ideal for those seeking additional flexibility and comfort.



Natural light from the loggia and the den illuminates the interior with a soft glow, creating an airy, inviting space to entertain or unwind.



### The Signature One-Bedroom Unit F

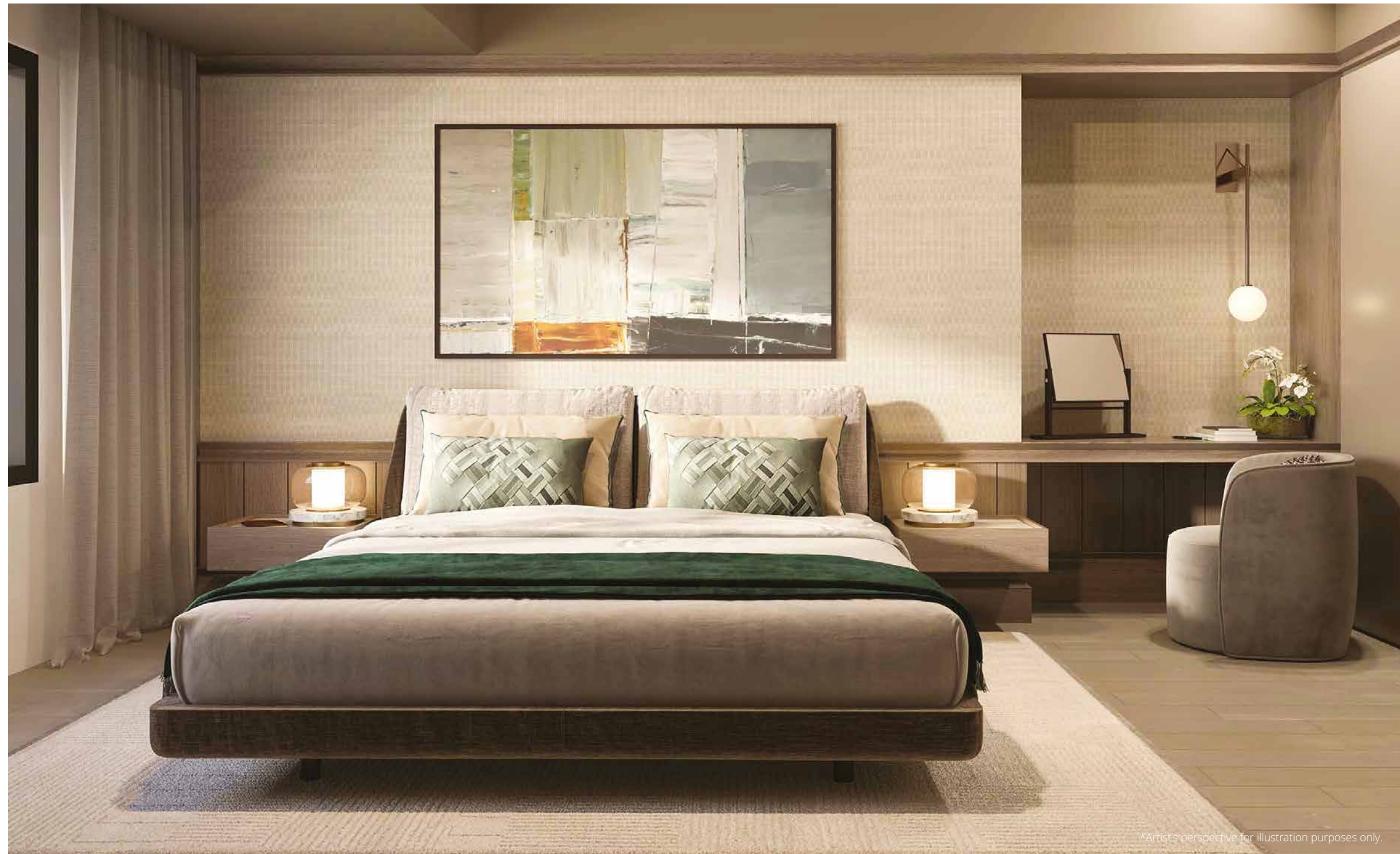
Approx. 86 - 87 sqm  
Approx. 925 - 936 sqft

*\*Artist's perspective for illustration purposes only.*





\*Artist's perspective for illustration purposes only.



\*Artist's perspective for illustration purposes only.

# The Two-Bedroom Unit (E, H, J)

Designed for families and professionals alike, The Two-Bedroom Unit has expansive windows that extend from the lofty living room to the guest and master bedrooms, opening the home to sweeping panoramic views. The voluminous loggia is nestled between the dining and living areas, bridging the interior and exterior and creating a space that is airy and full of natural light.

Rediscover the loggia as a central component of cosmopolitan al fresco living, providing unique opportunities for entertaining and relaxing by bringing the stunning views and outdoor experience into the fluid living and dining spaces.





\*Artist's perspective for illustration purposes only.

The rapidly changing needs of cosmopolitan living require new approaches to residential design. Taking a dramatically different and innovative strategy to traditional residential design, Haraya Residences reimagines the modern home for a new era.



### The Two-Bedroom Unit J

Approx. 141-142 sqm  
Approx. 1517-1528 sqft

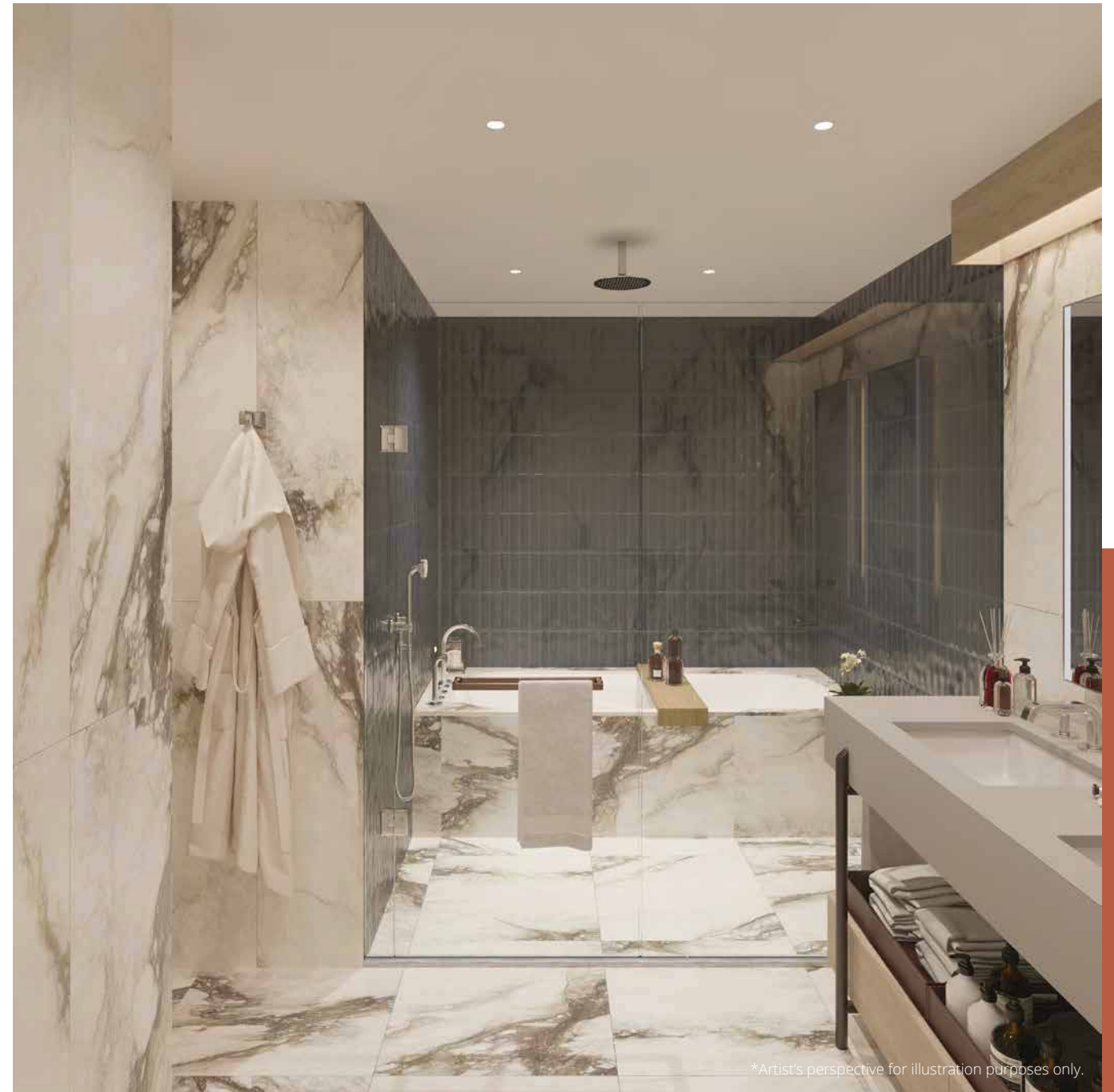
\*Featured here is one of three two-bedroom layouts in the building.  
\*Artist's perspective for illustration purposes only.

The generously appointed master bedroom features a spacious en suite bathroom, a walk-in closet, and large windows that invite natural light during the day, and frame the beautiful cosmopolitan cityscape at night.





\*Artist's perspective for illustration purposes only.



\*Artist's perspective for illustration purposes only.

# The Three-Bedroom Unit (G)

The Three-Bedroom Unit represents the full expression of our unique al fresco design vision—where interior spaces merge seamlessly with the outdoors through loggias—inviting you to step outside and into the heart of your home.

Designed for families and those seeking the luxury of space, The Three-Bedroom Unit is an exquisite balance of private and entertainment areas, offering sweeping views from the residence.





*\*Artist's perspective for illustration purposes only.*



*\*Artist's perspective for illustration purposes only.*

Entertain friends and family in an expansive, airy living space, enjoy brunch overlooking the city, or create your own workspace in the comfort of the shaded loggia—discover new possibilities and new perspectives at Haraya Residences.



### The Three-Bedroom Unit G

Approx. 186 -187 sqm  
Approx. 2002 - 2012 sqft

*\*Artist's perspective for illustration purposes only.*



65 *\*Artist's perspective for illustration purposes only.*



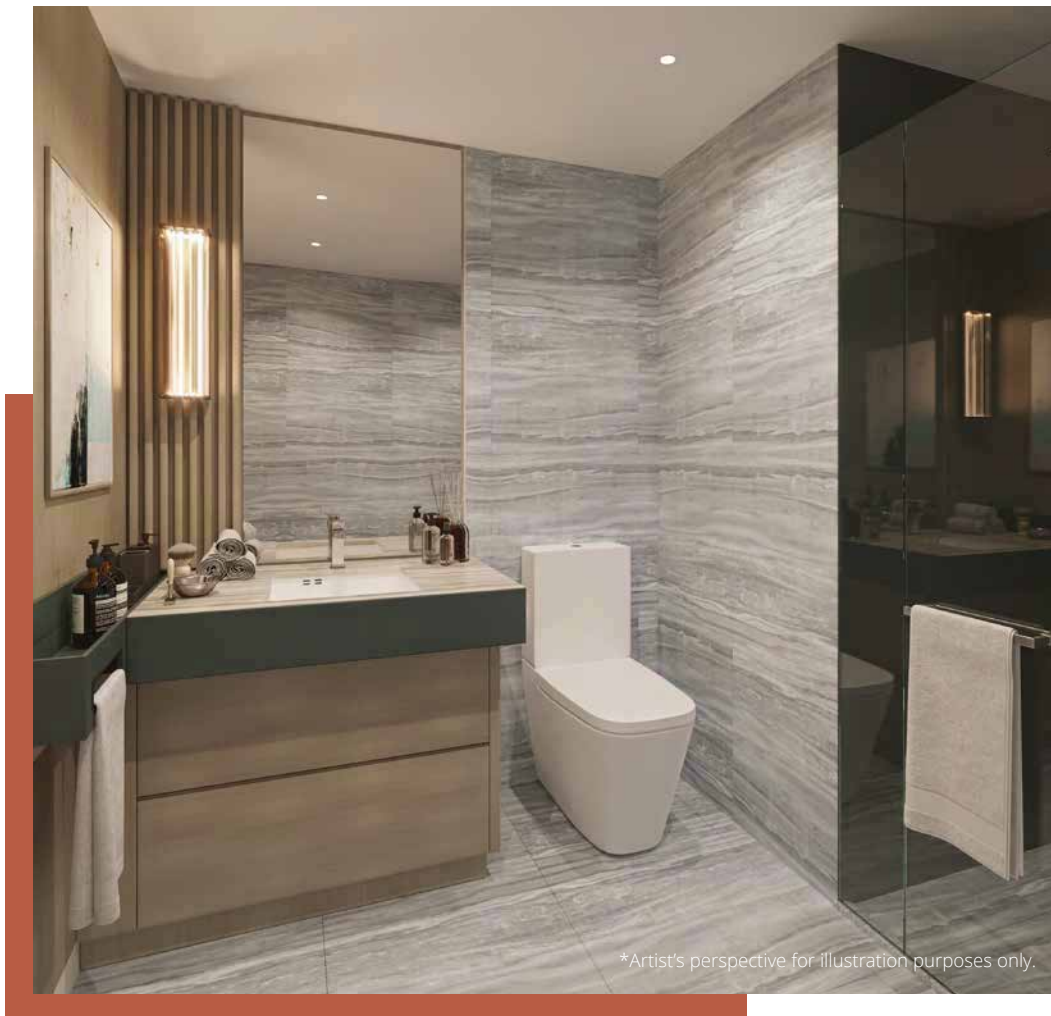
\*Artist's perspective for illustration purposes only.

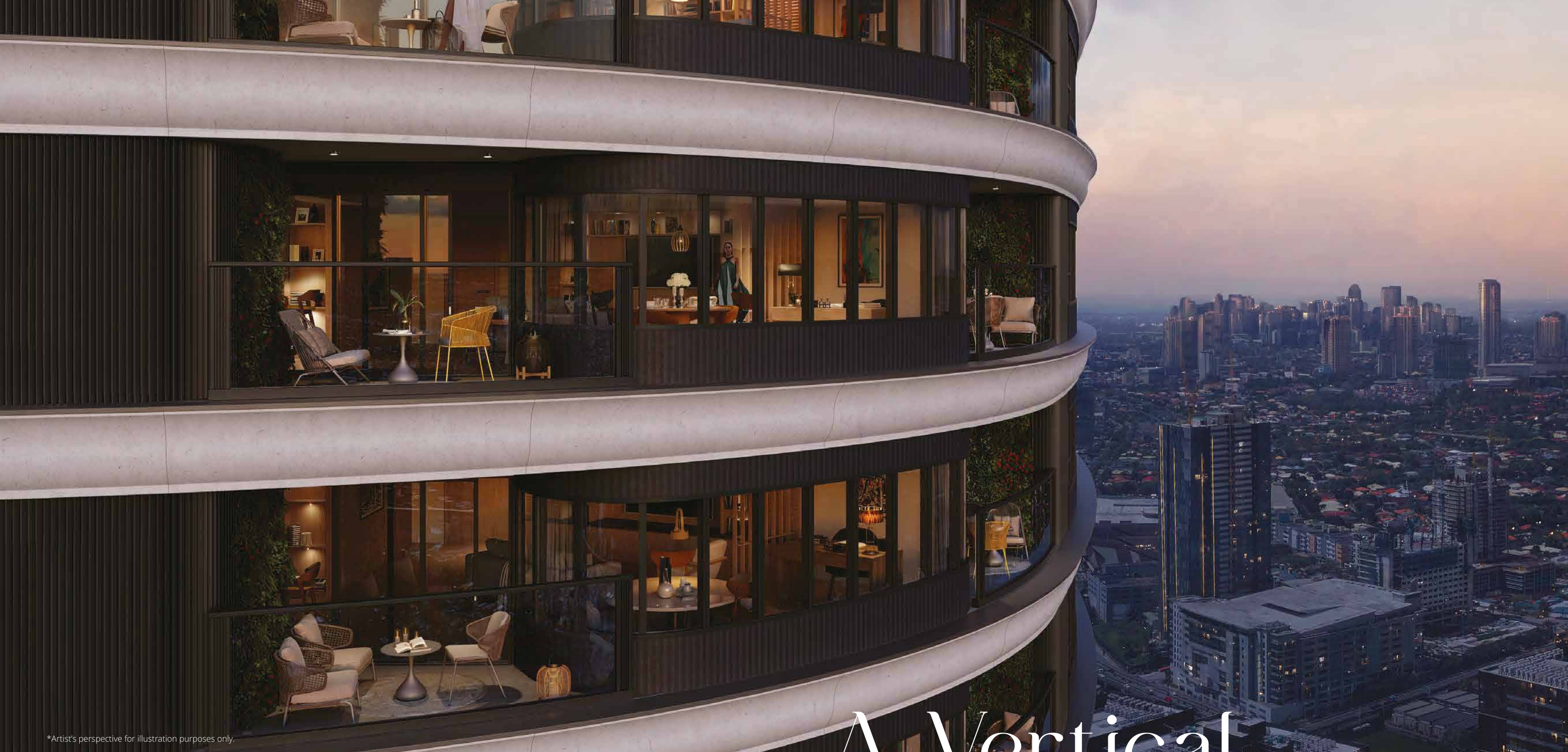


\*Artist's perspective for illustration purposes only.

Step through the floor-to-ceiling sliding doors into a fluid outdoor loggia space connected to the living and dining areas, as well as the master bedroom loggia. Discover a new sense of freedom and movement in your home.

Return to a sanctuary of calm in the exquisitely appointed master bathroom and beautiful fixtures.





\*Artist's perspective for illustration purposes only.

# A Vertical Gated Village for the Modern Era



\*Artist's perspective for illustration purposes only.

## P & T Group

CONCEPT ARCHITECT

P&T Group is the oldest and largest international architectural engineering practice in Southeast Asia, providing clients with innovative, commercially successful and sustainable design solutions since its inception in 1868. The award-winning global design firm, with over 1600 architects, engineers, urban designers and interior designers, operate in over 70 cities, on an excess of 10 million square meters of combined floor area, and is consistently ranked in the top largest consultancies in the world.

## FM Architettura

CONCEPT INTERIOR DESIGNER

FM Architettura is a world leader in the field of interior design, headquartered in Camerano, Italy. Founded in 2010, the firm is renowned for an unwavering commitment to craftsmanship, attention to detail, and comprehensive research and innovation in its work. FM Architettura has delivered over 150 one-of-a-kind projects around the world, ranging from bespoke superyachts and private mansions, to high-end residential towers, iconic luxury hotels, and more.

## P Landscape

CONCEPT LANDSCAPE ARCHITECT

P Landscape is a landscape architecture and design studio based in Bangkok, Thailand. PLA began as a boutique landscape design practice in 1997, and has since blossomed into an association of creative and talented individuals encompassing landscape architects, designers, horticulturalists, and artists. PLA specializes in high-end resort, hotel, and residential projects, both in the Southeast Asian region and worldwide, including projects in China, India, the Middle East, the Maldives, and the Fiji Islands.

## The Team Behind Haraya Residences

Architect of Record  
 Lighting Consultant  
 Structural Engineering Consultant  
 Electrical Engineering Consultant

Mechanical Engineering Consultant  
 Plumbing Engineering Consultant  
 Elevator Consultant  
 Façade Engineering

Casas + Architects, Inc.  
 Worktecht Corporation (HK) Limited  
 Sy^2 + Associates, Inc.  
 A. Licerio, Evangelista, Conception,  
 Siva, Solis Contractors Inc. (ALECS)  
 Isagani M. Martinez Consulting Engineer (IMMCE)  
 FL Figueroa & Associates Inc. (FLFA)  
 Roy Barry & Associates  
 ALT Cladding, Inc.

## Behind the development

Haraya Residences is brought to you by Shang Robinsons Properties, Inc. (SRPI), a joint venture between Shang Properties, Inc. and Robinsons Land Corporation. Aurelia Residences in Bonifacio Global City is another signature development of SRPI.

Haraya Residences joins Shang Properties' other luxury developments such as The Shang Grand Tower, Shang Salcedo Place, The St. Francis Shangri-La Place, One Shangri-La Place, Shang Residences at Wack Wack and Horizon Homes at Shangri-La at the Fort, and Robinsons Land Corporation's The Residences at Westin Manila Sonata Place.



## Experience Haraya Residences

Haraya Residences Sales Gallery and Sales Office

Address: Riverside Road corner Bridgetowne Blvd., Bridgetowne Destination Estate, E. Rodriguez Ave., Brgy. Rosario, Pasig City, Philippines

Website: [www.harayaresidences.com](http://www.harayaresidences.com)  
Email: [sales@harayaresidences.com](mailto:sales@harayaresidences.com)  
Mobile: 0917 5-HARAYA (427292)  
Telephone: (+632) 5-318-7200

DHSUD LS No.: 489  
Date Issued: 3 November 2022  
Project Completion: South Tower - 31 July 2028  
DHSUD NCR AA No.: 2022 /11 - 4163

Project Location: Riverside Road corner Bridgetowne Blvd.,  
Bridgetowne Destination Estate, E. Rodriguez Ave.,  
Brgy. Rosario, Pasig City  
Developer: Shang Robinsons Properties, Inc.  
Land Owner: Robinsons Land Corp.

